

# MCI UWE Inspection & Replacement

Information Sheet



## UNITIZED WHEEL END (UWE) HUB

**For Inspections of unitized wheel end assemblies on D/E/J series coaches**

Meritor Axles | **Steer** and **Tag** locations

### **INSPECTION:**

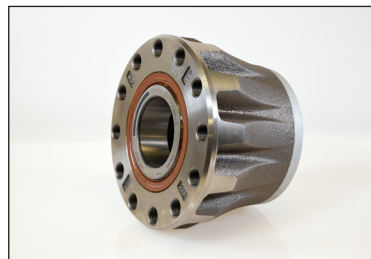
- Basic inspections of UWEs every 30,000 miles or six months of operation, whichever comes first.
- For coaches operating on rough terrains (such as gravel roads) for long periods, the basic inspection interval should be reduced to 20,000 miles.
- Detailed inspections of UWEs recommended every 100,000 miles or operation of one year, whichever comes first.

### **REPLACEMENT:**

- Replace the UWE-hubs at 500,000 miles or after five years, whichever comes first. This helps ensure maximum bearing reliability while the coach is in service.
- All UWE hubs that are exposed to extreme temperatures during operation should be replaced. High temperatures can result from brake drag, which can cause excessive brake pad and rotor wear, and possible heat checking on the rotor.



15-02-1072



MCI Part #	Description
15-02-1072	Bearing Assy - Hub

Information above is noted/detailed in MCI Service bulletin No. 3076B. Information on this sheet is subject to change at the discretion of MCI and/or its affiliates. Contact your MCI parts solutions manager or customer service representative for further details.



MCI Service Centers  
Toll Free 888-912-9983  
[www.mcicoach.com](http://www.mcicoach.com)

MCI Customer Service In the U.S.  
Toll Free (800) 323-1290  
Toll Free Fax (800) 525-4569

MCI Customer Service In Canada  
Toll Free English (800) 665-0155  
Français (800) 546-3457  
Toll Free Fax (800) 872-2486

